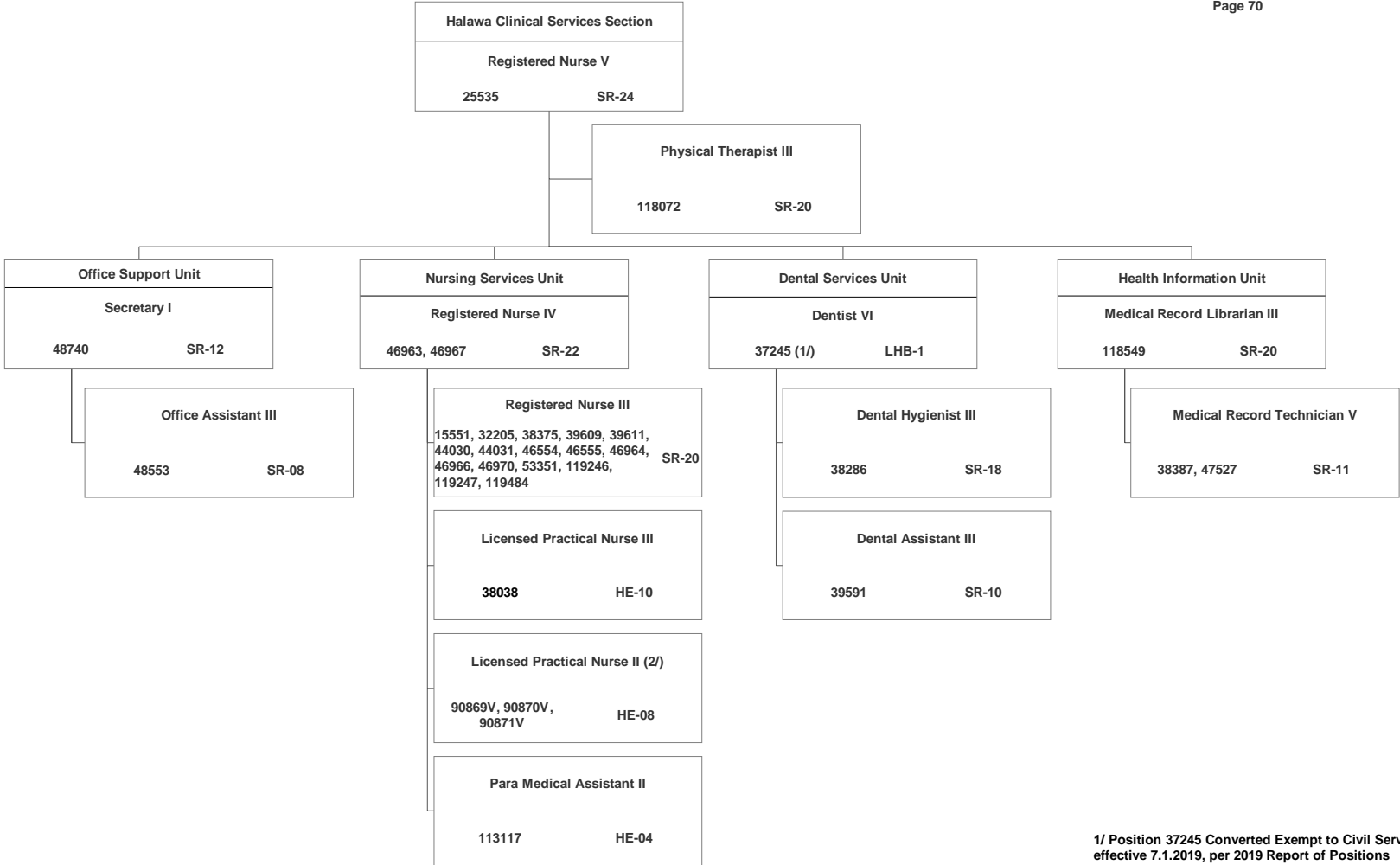


STATE OF HAWAII  
 DEPARTMENT OF PUBLIC SAFETY  
 OFFICE OF THE DEPUTY DIRECTOR FOR CORRECTIONS  
 HEALTH CARE DIVISION  
 CLINICAL SERVICES BRANCH  
 HALAWA CLINICAL SERVICES SECTION

POSITION ORGANIZATION CHART

June 30, 2020  
 Page 70



1/ Position 37245 Converted Exempt to Civil Service effective 7.1.2019, per 2019 Report of Positions Exempt from Civil Service (Act 300, SLH 2006).  
 2/ Act 5, SLH 2019, effective 7.1.2019.