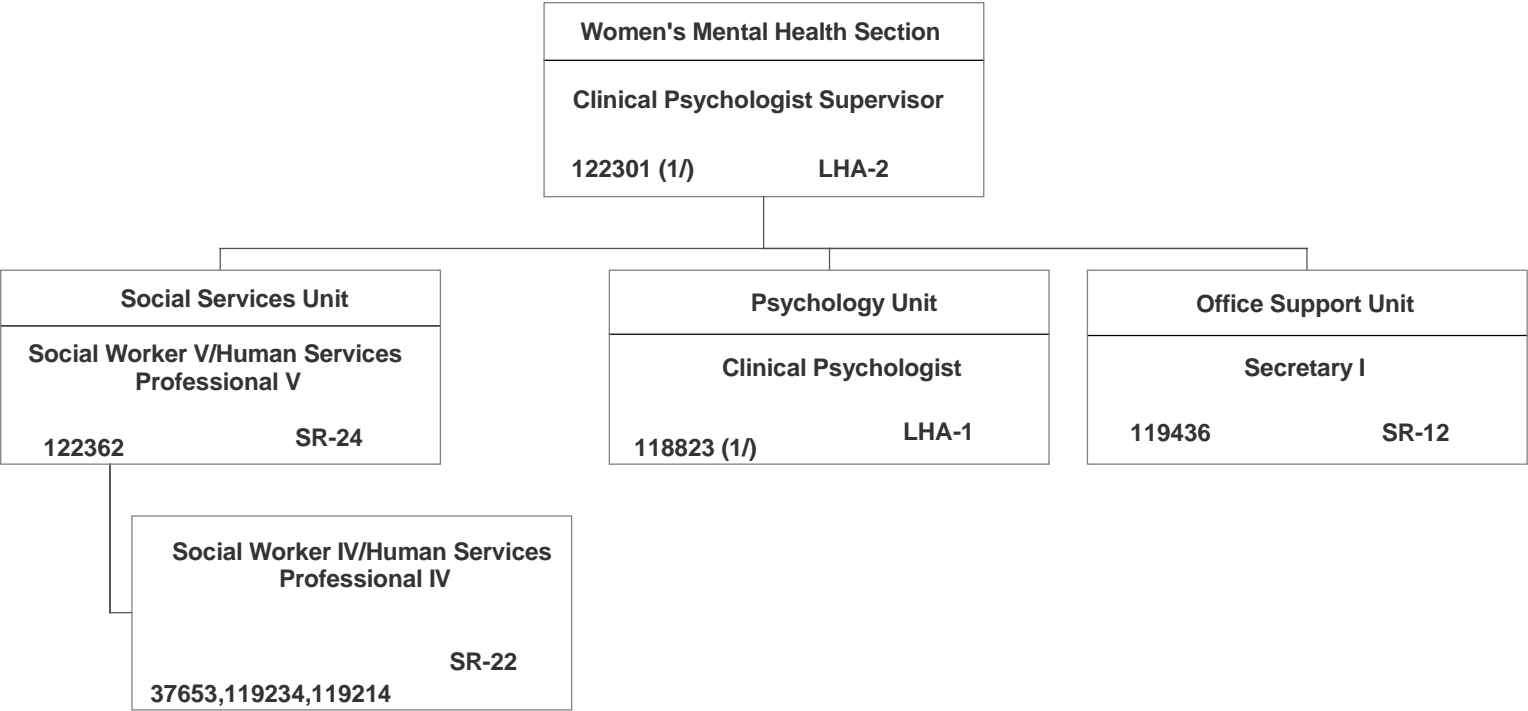


**STATE OF HAWAII**  
**DEPARTMENT OF PUBLIC SAFETY**  
**OFFICE OF THE DEPUTY DIRECTOR FOR CORRECTIONS**  
**HEALTH CARE DIVISION**  
**MENTAL HEALTH BRANCH**  
**WOMEN'S MENTAL HEALTH SECTION**

**POSITION ORGANIZATION CHART**

June 30, 2020  
 Page 76



1/ Position 118823 and 122301 Converted Exempt to Civil Service effective 7.1.2019, per 2019 Report of Positions Exempt from Civil Service (Act 300, SLH 2006).